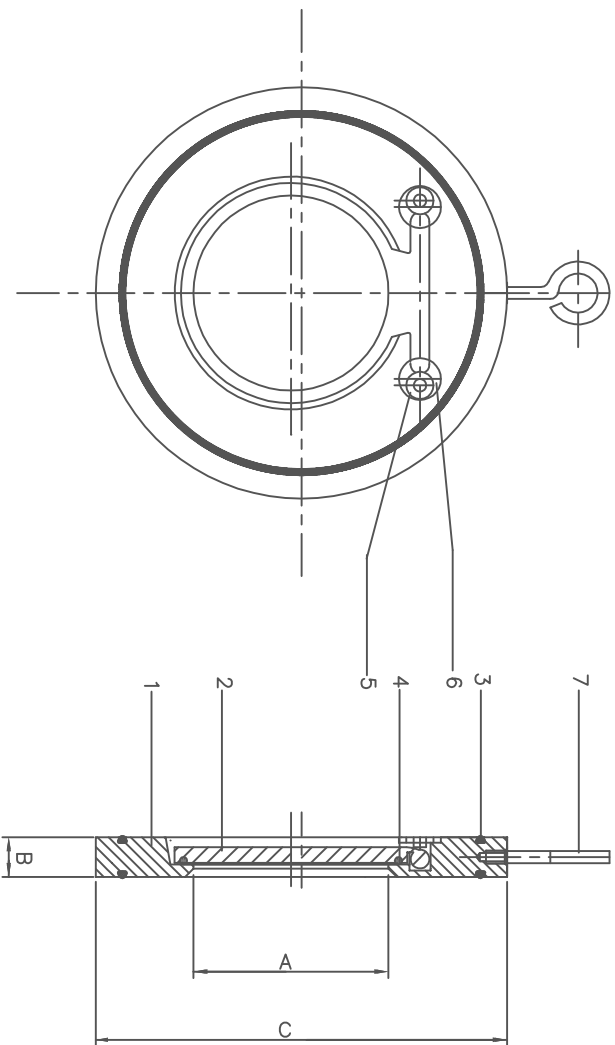


INTERVALVE® (ENGINEERING DATA SHEET)		DOC NO. : IVED-010
Title : Product Specification for IVC model Wafer Check Valve		REV NO. : 0
		DATE : 02/08/06
		PAGE NO. : 1 OF 1
GENERAL FEATURES	VALVE TYPE	SELF ACTING NON RETURN TYPE
	VALVE MODEL	IVC
	DESCRIPTION	WAFER TYPE SWING CHECK VALVE WITH O-RING SEALING ARRANGEMENT
	DESIGN STD.	MANUFACTURER STANDARD
	FACE TO FACE DIMENSION	API 6D & ANSI B16.10
	TESTING STANDARD	API 598
PRODUCT SPECS.	SIZE RANGE	25 NB TO 600 NB
	OPERATING TEMPERATURE	- 25° C ~ + 180° C (DEPENDING ON MOC)
	PRESSURE CLASS RATING	PN 10 & PN 16
	FLANGE STANDARD	ANSI 150, PN 10/16; NP 1.0/1.6; BS 10 TAB D & E
	BODY TYPE	WAFER WITH FACE SEALING O-RINGS
	DISC TYPE	WITH INTEGRAL HINGE PIN
	SEAT TYPE	O-RING SEAL ON DISC
	SEAT LEAKAGE	ZERO LEAK, TIGHT SHUT OFF
	FLOW DIRECTION	HINGE PIN SIDE TO DOWNSTREAM
	PAINTING & FINISH	EPOXY POWDER COATED (EXCEPT ST.STEEL)
MATL. OF CONSTRUCTION	BODY MATL.	SGI / WCB / CF8 / CF8M /SUPER Duplex / 6Mo / OTHERS
	DISC MATL.	SGI / WCB / CF8 / CF8M / SUPER Duplex / 6Mo / OTHERS
	SEAT O-RING MATL. (DISC)	NITRILE, EPDM, NEOPRENE, HYPALON, VITON
	BODY O-RING	SAME AS SEAT O-RING
	THREADED BUTTONS (FOR SIZES 25 NB TO 150 NB)	ST.STEEL, SS 304 / 316
	FIXING PLATE (FOR SIZES 200 NB TO 600 NB)	ST.STEEL, SS 316
	CSK SCREWS	ST.STEEL, SS 304
	LIFTING EYE BOLT	CARBON STEEL
OPERATION	OPERATION	SELF ACTING
1. SPECIFICATION SUBJECT TO CHANGE WITHOUT NOTICE DUE TO CONTINUOUS IMPROVEMENT. 2. OTHER MATERIAL OPTIONS OR NON-STANDARD REQUIREMENTS AVAILABLE ON REQUEST.		
PREPARED BY		APPROVED BY

VALVE SIZE	A	B	C				
			PN10	PN16	BS10D	BS10E	ANSI#150
25	14	16	72	72	69	69	64
40	22	19	93	93	86	86	86
50	30	19	108	108	97	97	104
65	40	19	128	128	110	110	123
80	52	19	143	143	129	129	136
100	71	19	163	163	161	161	174
125	93	19	193	193	193	193	196
150	114	19	219	219	218	215	221



FLANGE STD:-PN10/16/ASA150 c1150lb
 VALVE RATING- PN16
 HYD TEST PRESS- 1) BODY 24 KG/CM2
 2) SEAT 17.6 KG/CM2

CAUTION:- DO NOT USE FLANGE GASKETS
 DURING VALVE INSTALLATION.
 @@ - FOR MATERIALS PLEASE ENQUIRE

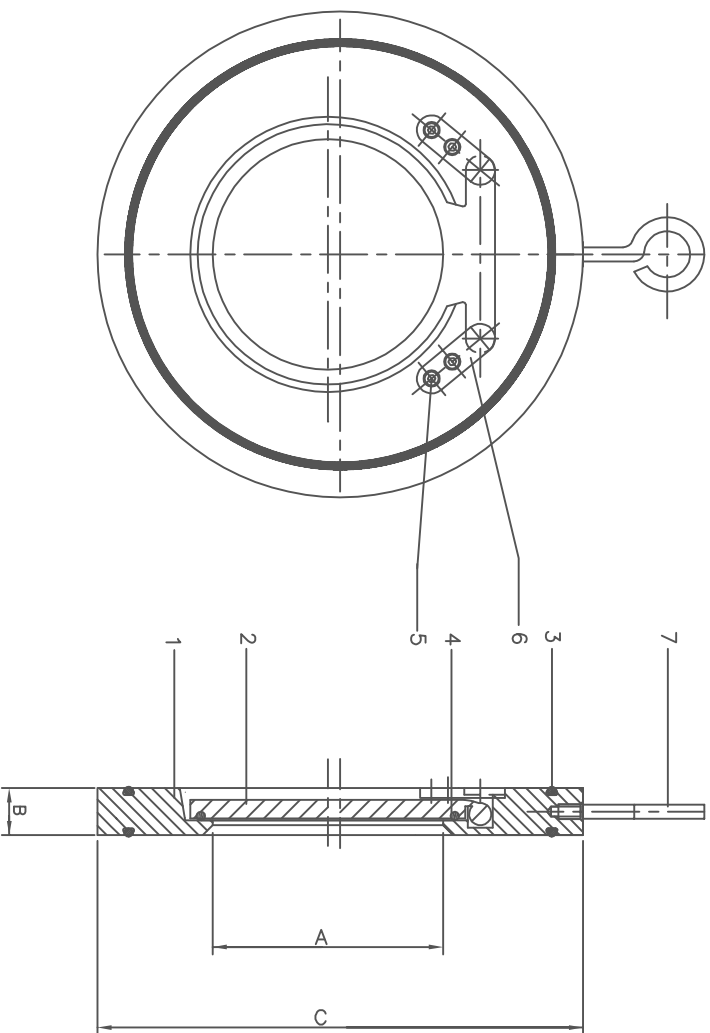
NO	DESCRIPTION	QTY	MATL.
7	EYE BOLT	1	@@
6	SEALING WASHER	2	ASTM A 351 GR.CF8M
5	CSK SCREW	2	AISI 304
4	ORING DISC	1	@@
3	ORING BODY	2	@@
2	DISC	1	@@
1	BODY	1	@@

TQ.NO.- IV.NO.-		APPD DT.	
IVC CHECK VALVE		CHKD DT.	
DRG.NO. PD14533/MDS001		DRN DT.	BMW 30.8.05

INTERVALVE

REV.	MOD.NO.	DATE	SIGN	IF IN DOUBT. ASK.	SCALE N.T.S.	CUSTOMER- P.O.NO.-
------	---------	------	------	----------------------	-----------------	-----------------------

VALVE SIZE	A	B	C				
			PN10	PN16	BS10D	BS10E	ANSI#150
200	157	28.5	274	274	274	272	278
250	195	28.5	329	329	335	335	339
300	230	38	379	385	385	383	409
350	270	44.5	438	444	446	446	449
400	310	51	489	496	496	496	512
450	360	60.5	538	555	559	559	545
500	406	63.5	593	616	616	616	602
600	490	70	695	733	727	724	714



FLANGE STD:-PN10/16/ASA150 c1150LB
 VALVE RATING- PN16
 HYD TEST PRESS- 1) BODY 24 KG/CM2
 2) SEAT 17.6 KG/CM2

CAUTION:- DO NOT USE FLANGE GASKETS
 DURING VALVE INSTALLATION.
 @@ - FOR MATERIALS PLEASE ENQUIRE

7	EYE BOLT	1	@@
6	FIXING PLATE	2	@@
5	CSK SCREW	4	@@
4	ORING DISC	1	@@
3	ORING BODY	2	@@
2	DISC	1	@@
1	BODY	1	@@
NO	DESCRIPTION	QTY	MATL.

TQ.NO.-		APPD	
IV.NO.-		CHKD	
		DT.	

IVC CHECK VALVE		DRN	BMW
		DT.	30.8.05

INTERVALVE

REV./MOD.NO.	DATE	SIGN	IF IN DOUBT. ASK.	SCALE N.T.S.	CUSTOMER- P.O.NO.-
--------------	------	------	----------------------	-----------------	-----------------------